

As diversity increases, people paradoxically perceive social groups as more similar

Xuechunzi Bai, Princeton University

Miguel R. Ramos, Birmingham University

Susan T. Fiske, Princeton University

SPSP2020 Data Blitz





How do human minds represent social diversity?

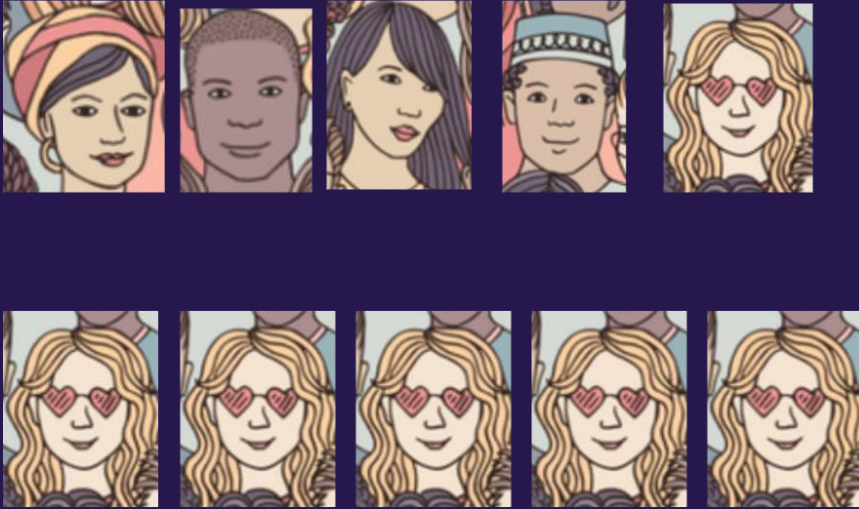




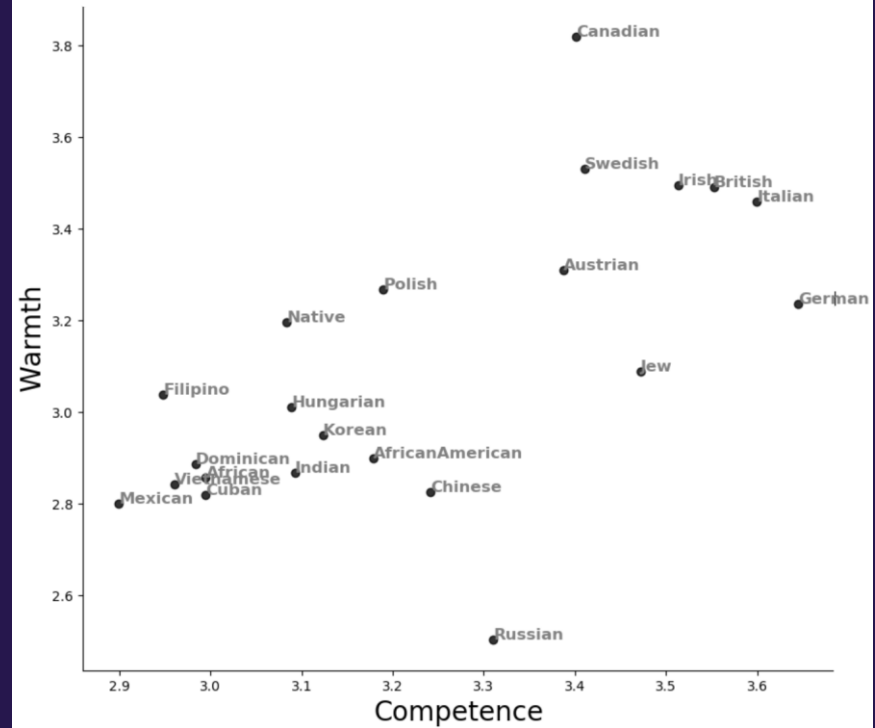
How do human minds represent social diversity?



Herfindahl index



Stereotype content dispersion

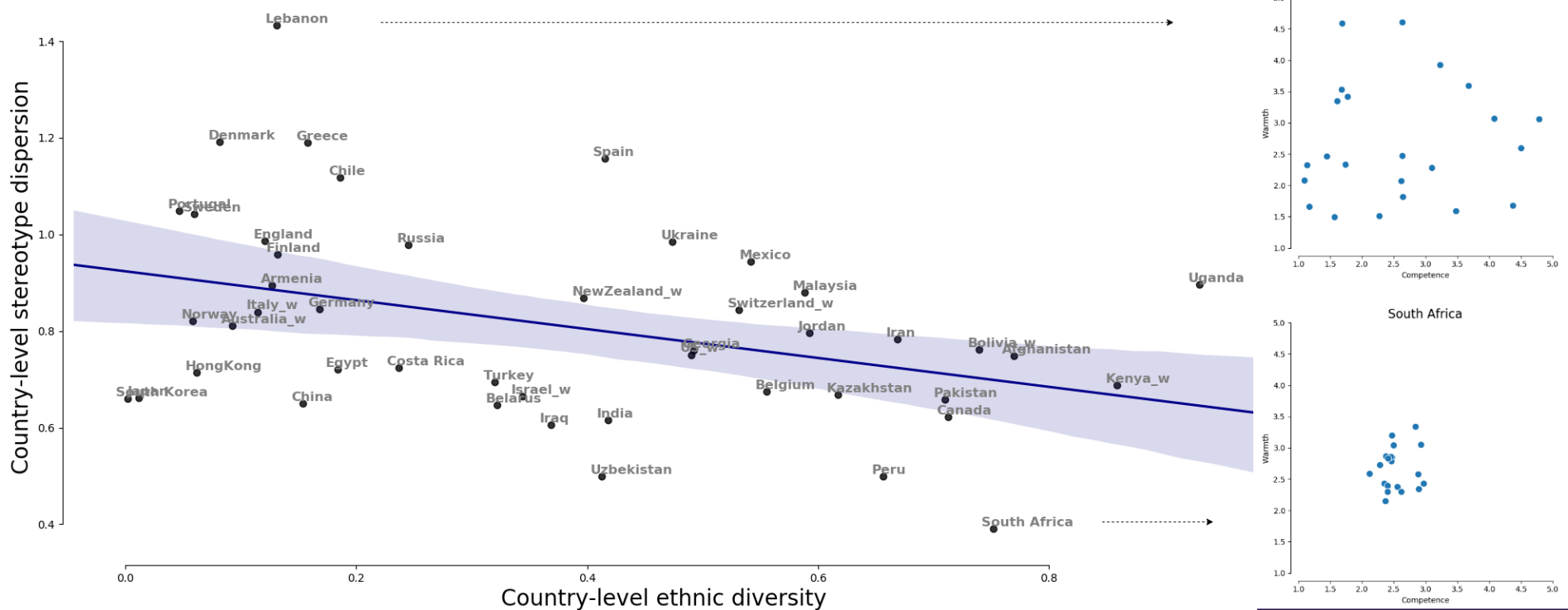


How to quantify diversity and stereotype dispersion?



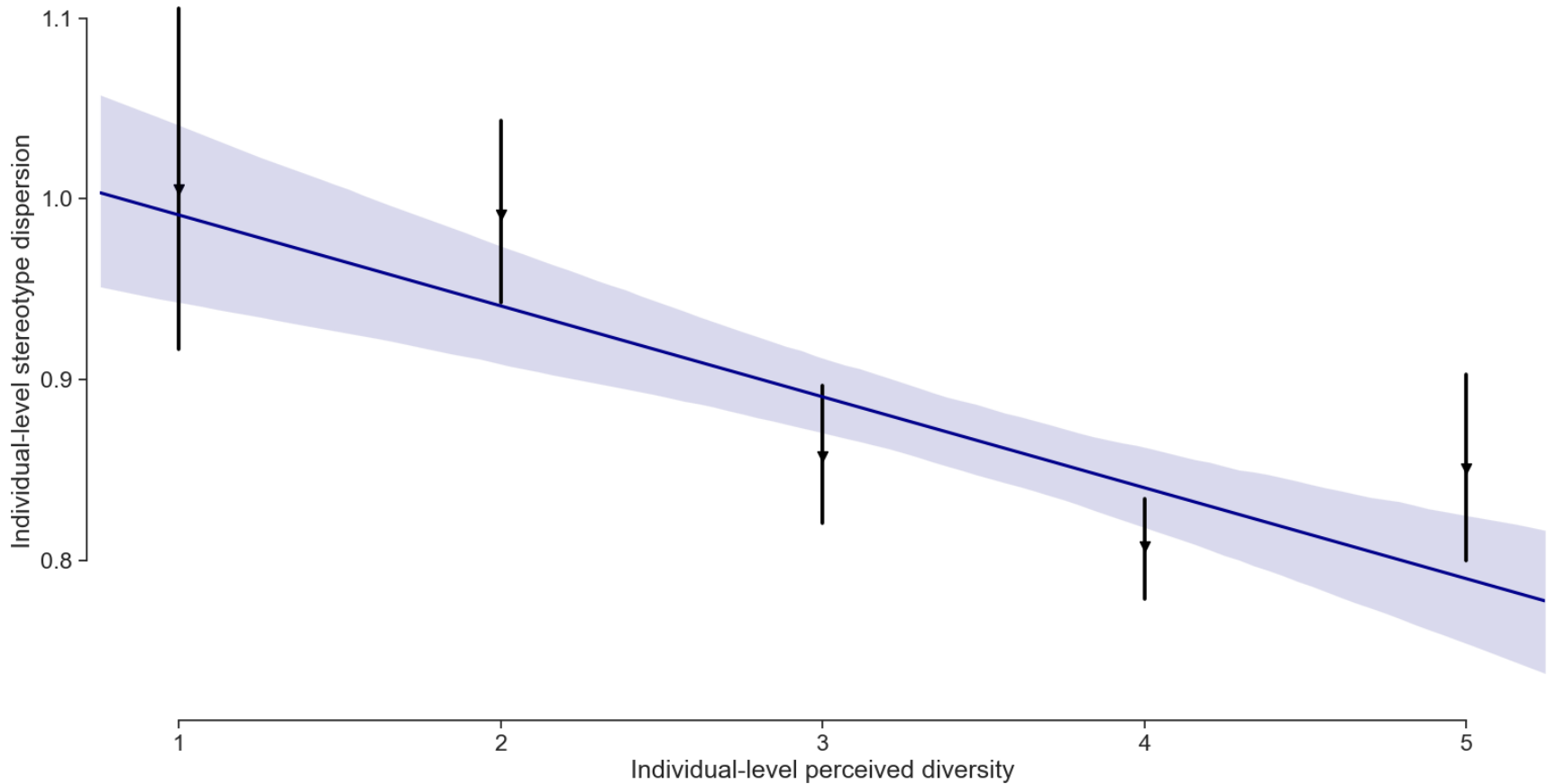
More diversity *less* stereotype dispersion

Diversity and stereotype dispersion in 46 nations



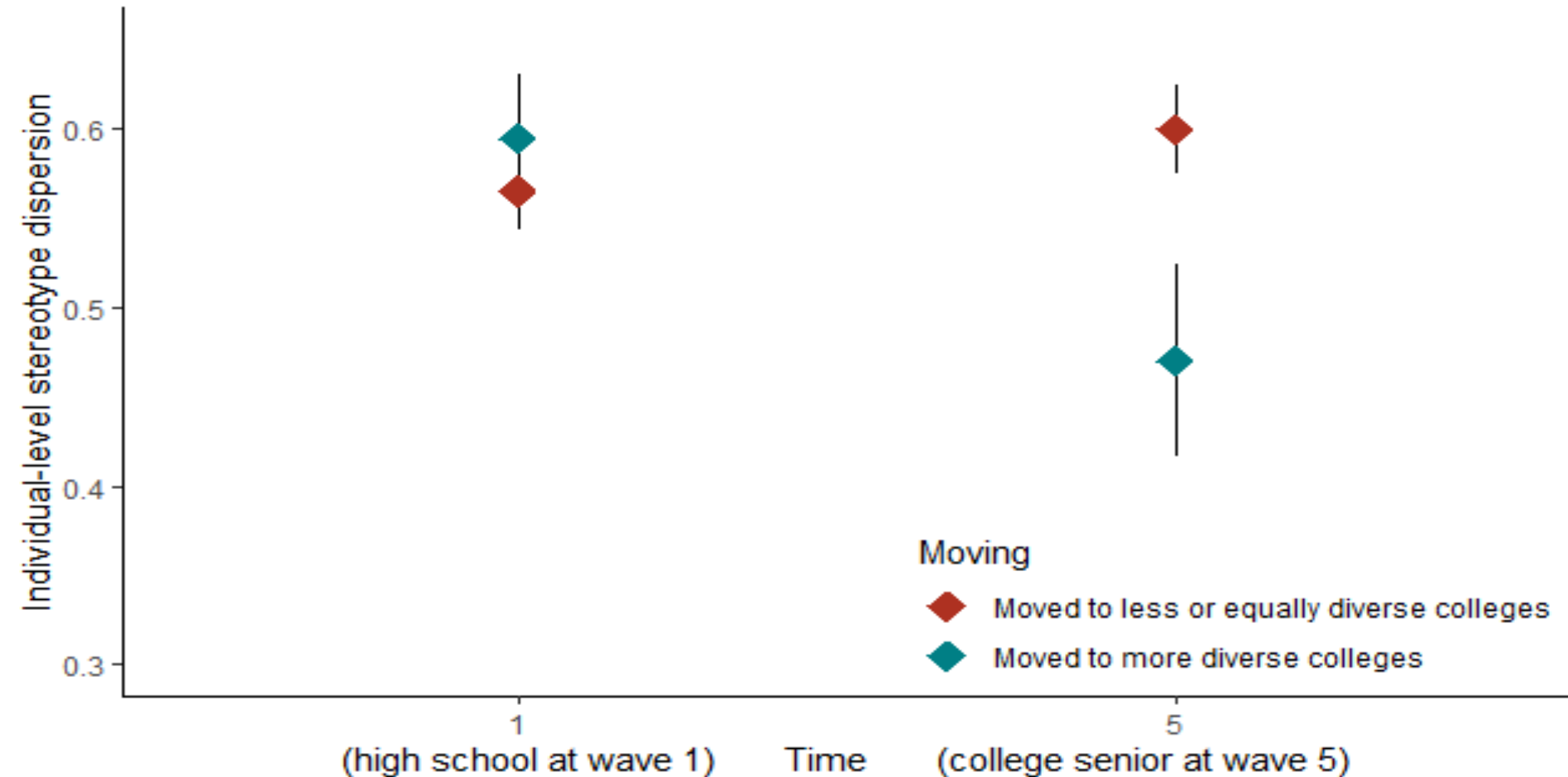
More diversity *less* stereotype dispersion

Diversity and stereotype dispersion in 1502 American individuals



More diversity *less* stereotype dispersion

Diversity and stereotype dispersion within individuals across times





Human minds adjust to diversity



We share much more in common with one another than we have in difference
- Viet Thanh Nguyen (2019)

Human minds adjust to diversity

